

Power Supply

This power supply changes mains alternating current to touch safe low voltage (DC). The power supply is only designed for indoor use and should not come into contact with water or dust. To prevent overheating the power supply should not be covered when it is in use.

The mains socket should be easily accessible. In the event of operational error, the plug should be immediately removed from the socket. In the event that the mains cable becomes damaged, then the power supply should not be used.

The power supply contains potentially dangerous voltages internally and the cover should not be removed. All service or maintenance work should be carried out by qualified personnel.

You can get assistance by contacting Meaco (U.K.) Limited.

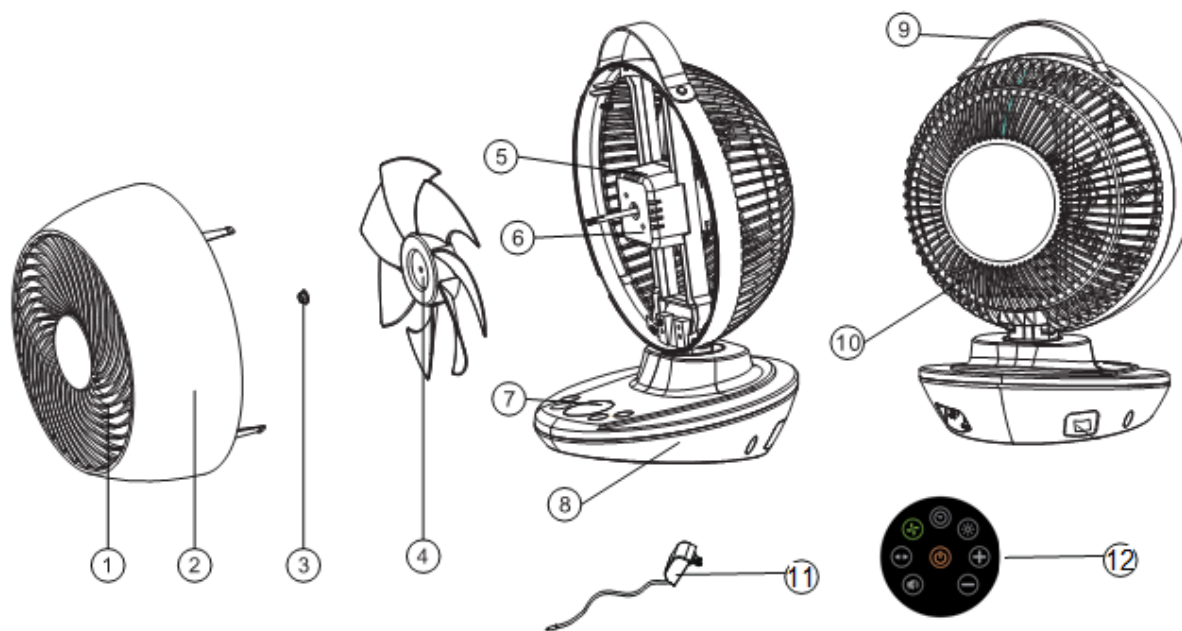
1. GENERAL ADVICE

Before putting your air circulator into operation for the first time, the instruction manual should be studied carefully.

After receiving the unit, you should check your air circulator for any transport damage. In case of damage, you should inform the sender immediately.

Keep the packaging for the air circulator in a safe place in order to be able to despatch the air circulator safely if it requires a service. In order to save space, you can simply cut through the adhesive tape using a knife and fold up the cardboard box.

2. PRODUCT IDENTIFICATION



1	Front guard	2	Front shell	3	Blade nut
4	Fan blades	5	Motor holder	6	Fan motor
7	Control panel	8	Base	9	Handle*
10	Back guard	11	Mains adapter	12	Remote control**

*The handle is made from artificial materials and does not contain any animal products.

**Supplied with a CR2025 DC3V battery. Please remove the tab from the battery before use.

3. CONTROL PANEL AND OPERATION



ON/OFF Button

When plugged in the unit will display the room temperature on the display. To turn the unit on press the On/Off button. The unit will beep and the fan will start. To turn off press the ON/OFF button again, you will hear a longer beep and the fan will slow down and stop.

Speed Button

Press the speed button on the control panel/remote controller to adjust the air flow fan speed. There are 12 fan speeds available. As long as the fan remains plugged in the MeacoFan will remember the last fan speed used.

Oscillation Buttons (OSC)

This button can be used to start and stop the sideways oscillation left and right. Press once to turn the oscillation on and press again to stop the motion, in doing so you can fix the direction of the fan.

The up and down angle can be fixed manually by hand, place one hand on the base and one hand on the top of the fan and gently move the head up or down as required.

Timer Button

When the fan is standby state, you can use the timer button to set an interval between, in 30 minute segments, 1 and 6 hours after which the fan will turn ON.

When the fan is turned on and running, you can use the timer button to set an interval, in 30 minute segments, between 1 and 6 hours after which the fan will turn OFF.

Functions only available via the remote control

Mute Button

Stops all beeps when buttons are pressed

Light Button

Turns the display on or off depending whether you want it to glow in the dark

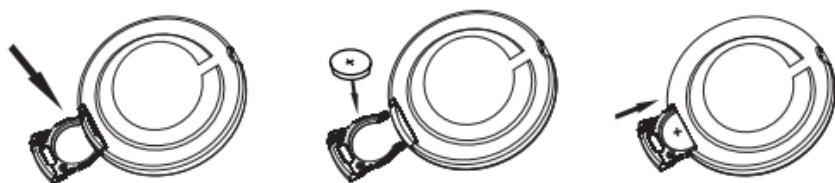
ECO Button

This button turns ECO mode on or off. If you select ECO mode the fan speed will automatically change as per the table below. In ECO mode the SPEED button is disabled.



Room temperature	Fan speed
<23°C	2
23 to 25°C	4
25 to 27°C	6
27 to 29°C	8
29 to 31°C	9
31 to 33°C	10
>33°C	12

The remote control has a range of approximately three metres. If the remote control fails to work whilst close to the fan then please replace the battery. The battery is a CR2025.



4. ELECTRICAL CONNECTIONS AND OPERATING CONDITIONS

This air circulator was designed to operate in a 220V-240V / 50Hz electrical installation. Make sure that the electric sockets are connected to earth and that all safety precautions are taken.

This air circulator can be operated within an ambient temperature range from +5°C to +40°C and with a non-condensing relative humidity.

5. SPECIFICATIONS

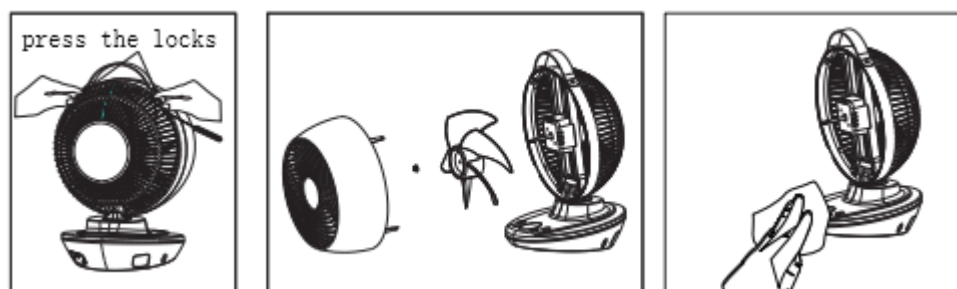
Model	MeacoFan 650
Operating conditions	+5°C to +40°C
Humidity operating range	Non-condensing
Fan motor type	5V DC
Maximum air flow	650 cubic metres per hour
Power supply	220 - 240V / 50Hz
Power consumption	3.5 to 12 watts
Oscillation swing angles	40° up and 5° down manually. 37° left and 33° right.
Noise level	20 to 50dB
Air circulator Dimensions (mm)	260 x 254 x 343mm
Box dimensions (mm)	300 x 275 x 385mm
Nett / Gross Weight (Kgs)	1.6 / 2.4Kgs

6. TROUBLESHOOTING

7. Trouble	Suggestion	Further action
No power to the fan	No power to the unit	Plug the unit in to the power socket and turn the socket on.
	Fan not turned on	Press the On button.
On button does not work	Check instructions above	If it still does not work then contact Meaco.
Oscillation does not work	Press oscillation button	If the oscillation button does not work then contact Meaco.
Increased noise level	Fan blades dirty	Clean the fan blade as per the maintenance section of the manual.
	Fan blades or fan motor loose	Tighten the fan blade as per the maintenance section of the manual.
	Fan motor fault	Contact Meaco
Fan speed does not change	Is the fan in ECO mode?	Change mode from ECO to access the fan speed settings.

8. CLEANING AND STORAGE

Always turn the fan off and unplug it from the socket before cleaning. Clean the fan with a soft, dry cloth, do not allow the fan to get wet.



- There are four lugs and one screw to be disengaged in order to remove the front fan guard.
- Unscrew the nut to release the fan blade.
- Dry wipe the fan to clean it, do not get parts wet.
- Reserve the above procedure to put the fan back together.

Store in its plastic bag or original box to protect the fan from dust.

Remember the fan can be used in winter to help distribute warm air more effectively in a room.

9. WARRANTY AND CUSTOMER SERVICE

There is a two year warranty on your air circulator from the date of purchase. Please register your warranty at www.meaco.com, as a thank you we will enter you into our monthly free prize draw.

All material or manufacturing defects will be repaired free of charge.

The following applies:

- Any repairs or replacement of components during the warranty period will not result in an extension of the warranty period.
- The warranty will expire if any alterations have been made, not genuine components have been fitted or if the air circulator has been repaired by a third party.
- Components subject to normal wear and tear, are not covered by the warranty.
- The warranty is only valid on presentation of the original, unaltered, and date-stamped purchase receipt.
- The warranty does not cover damage caused by actions that deviate from those as described in the user's manual or by neglect.
- The warranty does not cover faults caused by dirt or third party products.
- The warranty does not cover accidental damage.
- All claims for compensation, including consequential damage, will not be entertained.

To prevent unnecessary expenses, we recommend that you always carefully read the user's manual first. If this does not provide a solution, call Meaco and we will be happy to help.

This appliance is not intended for use by person (including children) with reduced physical, sensory or mental capabilities, or lack of experience and knowledge, unless they have been given supervision or instruction concerning use of the appliance by a person responsible for their safety.

Children should be supervised to ensure that they do not play with the appliance.

This air circulator has been imported into the U.K. by;

Meaco (U.K.) Limited
Meaco House
Parklands
Railton Road
Guildford
GU2 9JX

Telephone: 01483 234900
Email: service@meaco.com
Website: www.meaco.com
Fax: 01483 232700

Please record, for future reference, your date of purchase and where you bought the air circulator from here.

Date of purchase.....

Purchased from www.meaco.com (if not then please record the supplier's name below).

Serial number:.....

If you do develop a fault at any time then please do call us and we will always try and help you as best we can.

Please save the box just in case we need to collect the fan from you for a service.